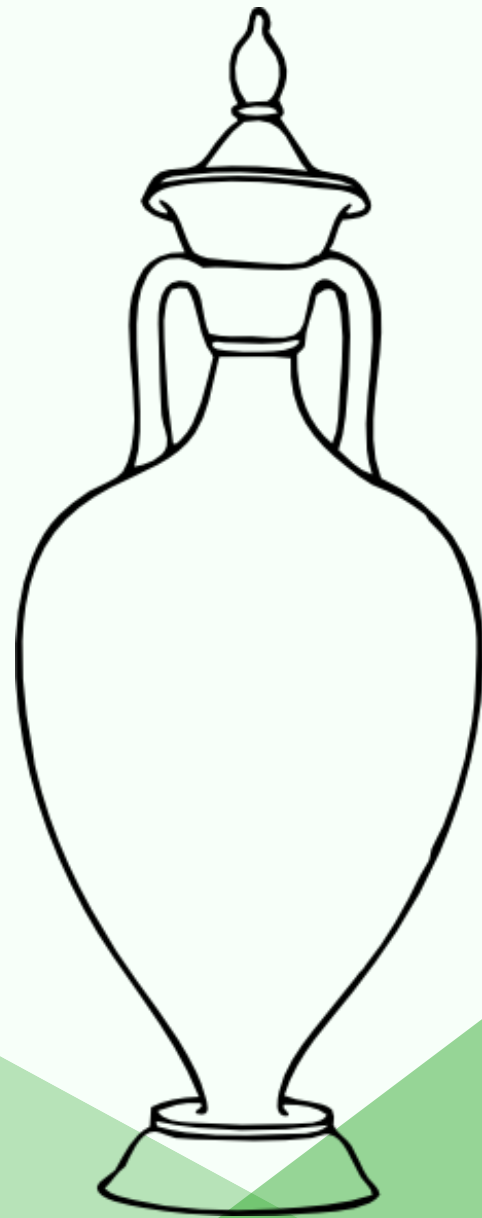
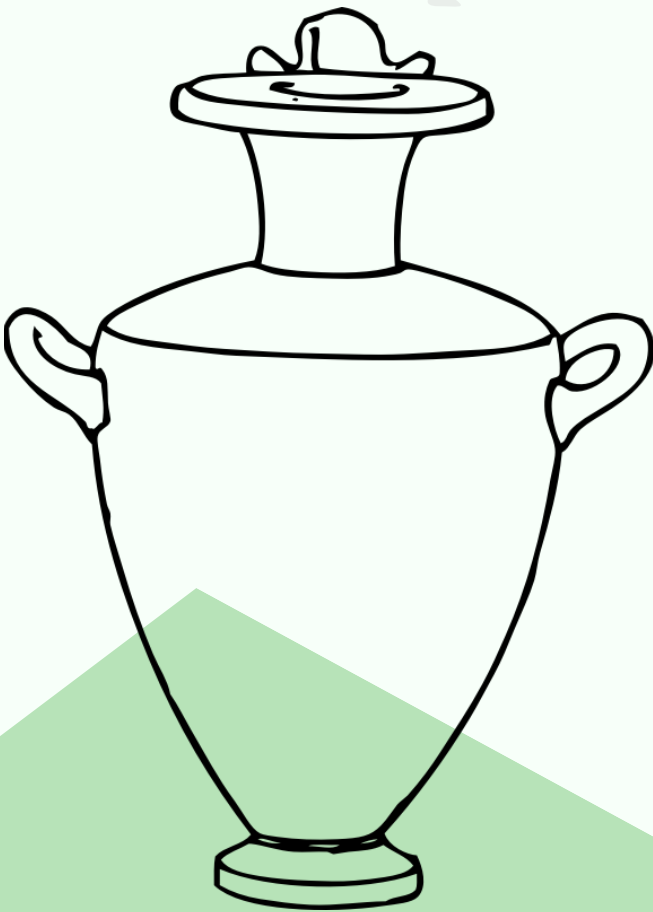


# ACTIVITY BOOKLET

## Visiting Vessels around The Globe



# VESSELS AND THEIR SYMBOLS

The Davis collection contains vessels with different styles, materials, and purposes unique to where and when they were created. These vessels contain culturally important images or symbols.



In ancient Greece, owls were a symbol of knowledge and wisdom. In Athens, the capital of Greece, the citizens connected owls to the goddess of their city, Athena.



On this blue-and-white bowl, bats symbolize good luck and peaches symbolize longevity. China is known for blue-and-white ceramics made from delicate porcelain.



This vessel was used in Asante or Krinjabo funeral rituals for a prominent family member in a household. The turtles and the snake here could be emblems of the deceased's extended family.



This portrait vessel shows the face of a famous Moche ruler. Moche people would have recognized his status as ruler by the bat emblem on his headdress.

**USING THE SYMBOLS PROVIDED ABOVE AS YOUR INSPIRATION,  
CREATE YOUR OWN VESSEL!**





# GREEK CERAMIC VESSELS

The Davis has a variety of ancient ceramic vessels. Ancient potters sculpted and painted vessels in many shapes, sizes, and colors.

Let's take a look!



This kylix has a stylized shell design. It would have been used for drinking wine in Greece's Mycenaean period, around 1350 B.C.E.

The vessel on the right, a pyxis, is from the 4th century B.C.E. It was meant to hold jewelry and cosmetics.



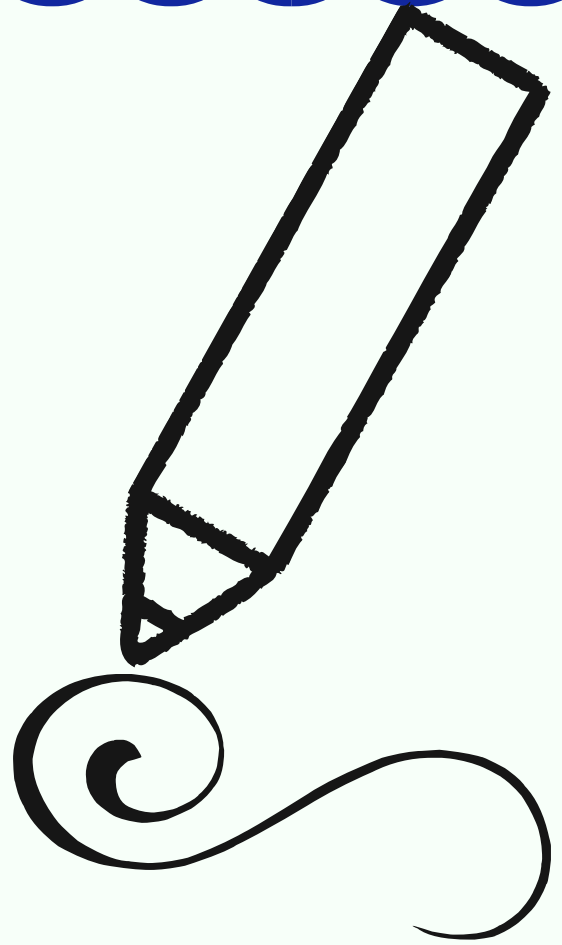
The alabastron below is painted with a bird and two leopards. It would have held oils, perfumes, and cosmetics.



This red-figure amphora shows a man and woman. This vessel would have stored and transported water.







**WITH YOUR PENCIL, FINISH THESE VESSELS!**



# EAST ASIAN VESSELS

The Davis's East Asian gallery features many colorful vessels. China was especially known for the blue-and-white ceramics they shipped around the world. Check out these different vessels!



Many blue-and-white vessels at the Davis have plants as symbols. This blue-and-white vessel shows an outdoor scene with a bird and tree.



While many of the dishes on display are circular, the one above is unique! Imperial kilns made the copper-red glaze seen in this square dish.



Celadon refers to green glazes that look like jade. Can you see the dragon? Dragons were reserved for the imperial family.

This bright yellow glaze on porcelain is known as imperial yellow. In China, yellow is the color of the earth, emperor, and the imperial family.



# SEEKING SYMBOLS: EAST ASIAN VESSELS

As you walk through the Davis's East Asian gallery, keep an eye out for different symbols, from animals to plants.

Complete the word search below to find the symbols hidden on these vessels!

B	A	T	S	W	W	W	W	Q	Y
P	H	O	E	N	I	X	Y	G	J
B	P	K	C	D	R	A	G	O	N
C	P	H	E	A	S	A	N	T	S
R	B	A	M	B	O	O	T	V	T
A	T	F	L	O	W	E	R	S	X
N	M	T	U	R	T	L	E	J	I
E	P	E	A	C	H	E	S	Q	T
M	L	B	M	S	P	V	P	H	R
E	A	H	U	J	I	V	I	K	I

BAMBOO

BATS

CRANE

DRAGON

FLOWERS

PEACHES

PHEASANTS

PHOENIX

TURTLE



**WE HOPE YOU ENJOYED THIS  
ACTIVITY BOOKLET AND  
EXPLORING THE GALLERIES  
AT THE DAVIS!**



*#mydavis*