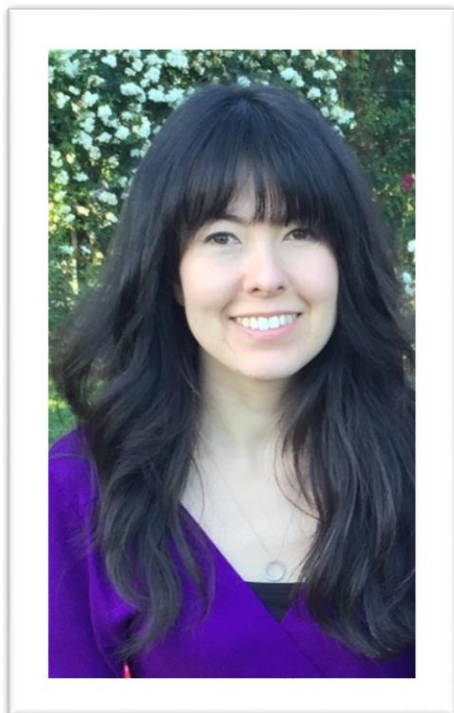


ARTHURINA FEARS JOINS THE DAVIS MUSEUM AT WELLESLEY COLLEGE AS MANAGER OF MUSEUM EDUCATION AND PROGRAMS



WELLESLEY, Mass. – Dr. Lisa Fischman, Ruth Gordon Shapiro '37 Director of the Davis Museum at Wellesley College in Massachusetts, has appointed Arthurina Fears as the Manager of Museum Education and Programs. In this position, Fears will develop and plan a wide range of programs that enrich and expand the educational mission of the institution. These programs include events, artist talks and scholarly lectures, panel discussions, screenings, symposia, and Family Days. Fears will assume the role on February 1, 2017.

“With Arthurina’s arrival, we are excited to develop new ways to engage our audiences, on-campus and beyond, through innovative programming,” said Lisa Fischman. “Her experience combined with the upcoming exhibitions at the Davis will make for some incredible experiences for audiences of all interests.”

Fears comes to the Davis Museum from the Jordan Schnitzer Museum of Art at the University of Oregon, where she most recently held the position of Manager of Museum Education Programs. At the Schnitzer, she designed and implemented creative and dynamic programs to help visitors from campus as well as the surrounding communities engage with temporary exhibitions and permanent installations. She has been particularly committed to developing programs that celebrate the multiculturalism of the region, having pioneered a bilingual/ESL Spanish/English art appreciation program as well as organizing the first Lunar New Year celebrations at the Schnitzer. Fears is interested in the connections between art and wellness in the museum context, and plans to integrate this into future programming at the Davis. Fears holds a Master’s Degree in Art Education from Boston University and a Graduate Certificate in Art History from Southern Illinois University.

ABOUT THE DAVIS MUSEUM

One of the oldest and most acclaimed academic fine arts museums in the United States, the Davis Museum is a vital force in the intellectual, pedagogical and social life of Wellesley College. It seeks to create an environment that encourages visual literacy, inspires new ideas, and fosters involvement with the arts both within the College and the larger community.

ABOUT WELLESLEY COLLEGE AND THE ARTS

The Wellesley College arts curriculum and the highly acclaimed Davis Museum are integral components of the College's liberal arts education. Departments and programs from across the campus enliven the community with world-class programming— classical and popular music, visual arts, theatre, dance, author readings, symposia, and lectures by some of today's leading artists and creative thinkers—most of which are free and open to the public.

Since 1875, Wellesley College has been the preeminent liberal arts college for women. Known for its intellectual rigor and its remarkable track record for the cultivation of women leaders in every arena, Wellesley—only 12 miles from Boston—is home to some 2400 undergraduates from 49 states and 58 countries.

###

Media Contact: Mary Agnew
617-512-7489, Magnew@wellesley.edu
High-resolution images and interviews available upon request