



Animal Adventures

A Treasure Hunt

the Davis.
DAVIS MUSEUM AT WELLESLEY COLLEGE

Level 2: Bottle in the Form of a Vulture

Using the stairs or the elevator, find this object in the Latin America gallery.

This bottle was made by a potter in Peru over two thousand years ago. A simple tool has become a work of art.



Think of something you use in your daily life (like a water bottle or backpack) and draw a design in the shape of your favorite animal.

Level 2: Korè Surukuw and Dajè

Continue on Level 2 to the African Gallery.



This mask represents a hyena. It reminds people to be kind and generous, not mean and greedy like the hyena.

How might animals represent human personality traits? What characteristics might belong to... a rabbit? A chicken? A bear?



This antelope mask would be worn by a dancer in a celebration of the harvest and the start of a new season.

What kind of animals or animal behaviors do you see in the summer? How about in the fall or winter?

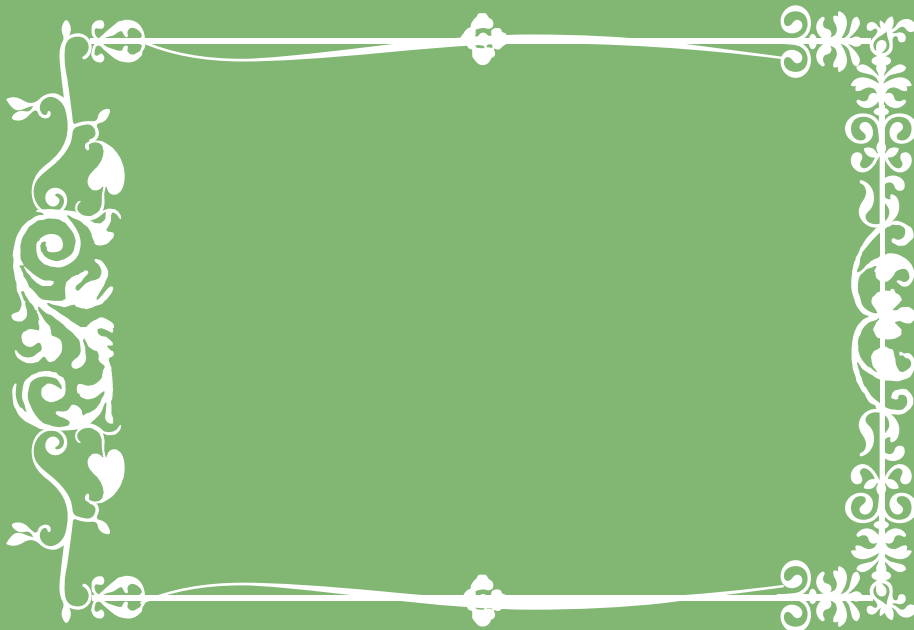
Level 4: Friends in a Storm Approaching

Take the stairs or elevator to the next floor.

The artist James McDougal Hart painted this picture. He lived in New York City, but liked to go outdoors and paint pictures in the countryside.

What do you do like to do outside?

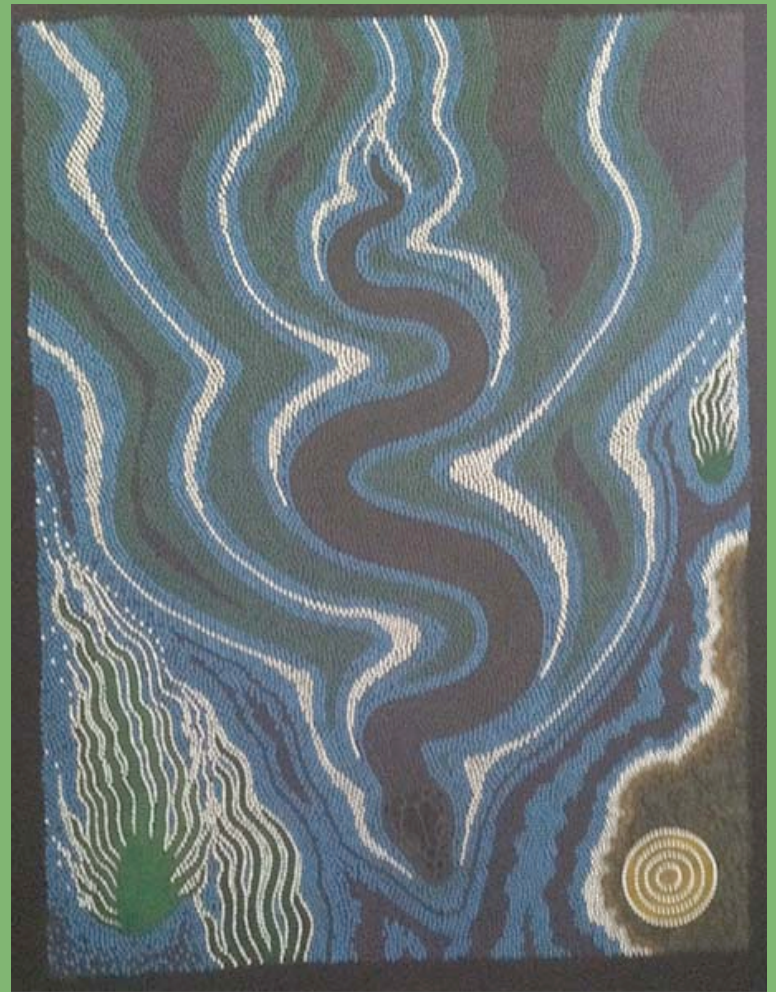
When there's a thunderstorm, what do you do? Draw a picture of yourself and your friends or family when it thunders.



Level 5: Black Water Snake (Waayamaa)

Head upstairs to the contemporary gallery.

In this painting by Carmel Richardson, the natural world creates patterns, like the waves of the snake against the water.



We can find lots of patterns in animals and nature, like a cheetah's spots or a snail's shell. What other patterns can you think of?

Thanks for joining us on Animal Adventures!

Make your way to the lobby to create
art of your own!

